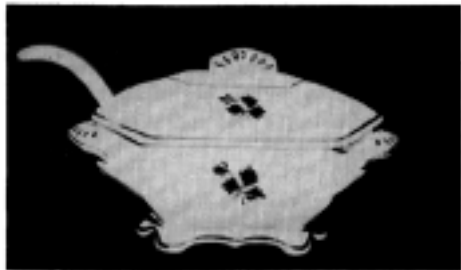


Climbing the Tea Leaf Family Tree: Copper-Lustre Decorated Ironstone 1840-1860 (Continued)



Shaw's Hexagon (Sunburst) is another very angular body style. This sauce tureen has straight lines and lid but note the more decorative lines of the pedestal base and simple arc of the ladle handle.

The next Shaw pattern has no official body style name-Tom and I began calling it Deco when we first found it. You would have to go a long way to find more simple lines than those on the creamer and teapot pictured here. It's plain round with only a small knot at the top of the handles being the only variation from the simplicity. Its elegance is in its simple lines.

(Editor? note: this body style has been officially named "Simplicity"-it truly is elegant in shape and form.)

Enoch Wedgwood

Enoch Wedgwood produced two square styles: a very simple square shape with very straight lines and no ornamentation and his Square Ridged style with its ribbing decorating an otherwise very simple form.

The Simple Square creamer has only a few copper lustre touches that add decoration to the throat and on the handle, and the Square Ridged creamer illustrates that while the lines are not ornate, they are not quite straight or simple.. The top rim has a small extra scallop at the handle and the handle and body itself have added curves to their lines. This body style was copied in the 1950's by Red Cliff.

Arthur J. Wilkinson

The Plain Round sauce tureen by Arthur J. Wilkinson has uplifted handles that carry out the simple but lovely lines. The extra added lustre strokes and finial lend additional touches to change this piece from plain to pretty.

In contrast to the simple lines seen in the Plain Round example, Wilkinson's Maidenhair Fern is embellished with embossing and elegant lines which resemble the



About the Photograph, top to bottom:

Top, Arthur J. Wilkinson Plain Round sauce tureen

A complete set of five Wilkinson Maidenhair Fern pitchers 'bottom:

more ornate Meakin Brocade and Chelsea patterns. This complete set of five Wilkinson Maidenhair Fern pitchers make a great showing. Note the ornate handles and pedestal-like bases seen on embossed or fluted body styles during this era.

By the turn of the 20th century, the public's taste turned to other types of china decoration. The heyday of Tea Leaf ironstone was over-but only temporarily! As Tea Leaf china was passed down from Mother to Child to Grandchild, it's beauty was not forgotten. Indeed, the revival of the Tea Leaf decoration in the mid 20th century attests to its continuing popularity

And eight hundred members of Tea Leaf Club International can attest to our love for Grandma's Tea Leaf by the devotion with which we collect and proudly display this beautiful enduring ironstone china of the 19th



About the Photograph:

Above, top to bottom:

Shaw's Hexagon sauce tureen

Shaw Simplicity creamer & teapot

Fern pitchers

Enoch Wedgwood Simple Square creamer

Wedgwood Square Ridged creamer

About this Educational Supplement:

This is the fourth of a four part series documenting the 1993 convention presentations.