

Climbing the Tea Leaf Family Tree:

Copper-Lustre Decorated Ironstone 1880-1900

A Program presented by Carol Chadwick at the
1993 Tea Leaf Convention in Nashville, Tennessee
An Education Supplement to Tea Leaf Readings, May 1994

by Carol **Chadwick**

Tea Leaf body styles changed a great deal during the waning years of most English potters. The styles became less ornate, more simple in design. We still find the use of embossing but a bit more subdued than we saw earlier in styles such as Lily-of-the-Valley and Bordered Fuchsia.

Finials also became less ornate for the most part; but again, the use of some animal-like figures refutes the statement that all finials were plain. As the title implies, this period covers the last era for Tea Leaf produced by English potters.

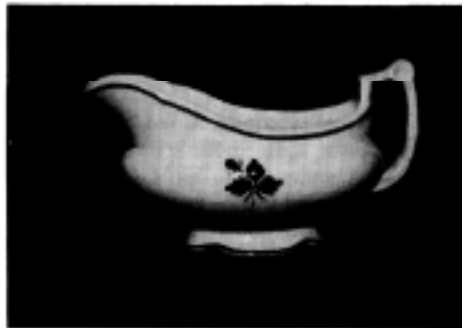
W.&E. Corn

First, we will examine the wares of one of the lesser known potteries: W.&E. Corn. During the period 1864 to 1904, this pottery produced a variety of body styles including the popular Square Ridged style with its melon ribbing and also styles with floral embossing such as the Daisy and Bellflower, styles pictured in the photographs here.

The Square Ridged sugar bowl and teapot are decorated with gold lustre motifs. This shape is typical of the era with its straight lines. Notice the angular lines of the handles but the slight arc of the spout, the top rims are scalloped adding a little excitement to an otherwise plain style. Although the lines are simple, there are plenty of appointments.

The Daisy gravy boat (as I call it) shows simple graceful lines with focal points in the foot and handle decorated with the daisy in the crook.

The lines of the Bellflower shape are graceful, but straighter than the Daisy, with a fairly ornate handle and lovely embossing. The floral shapes are found decorated with either the copper lustre or the gold lustre Tea Leaf motifs.



Henry Burgess

Henry Burgess also potted ironstone during this period (1864 to 1892). His Simple Square body style is very plain but is characterized by the deeply recessed base. Lustre trim on the handle of the creamer pictured here is the only extra design.

An excellent example of the very angular, sharp lines of the period is this Clementson Bros. Teaberry creamer in the Heavy Square body style. Its registration number of 20941 dates it to 1885.



About the Photographs:

Left top to bottom:

W&E Corn Square Ridged sugar, teapot

W & E. Corn Daisy gray boat

W. & E. Corn Bell-flower gray boat

Herny Burgess Simple Square creamer

Above: Clementson Bros. Teaberry creamer

John Edwards

John Edwards also produced ironstone in simple straight-line body styles, but dressed them up with interesting embossing such as the feather border featured on his Peerless shape and the whimsical dolphin heads found on the Victory shape.