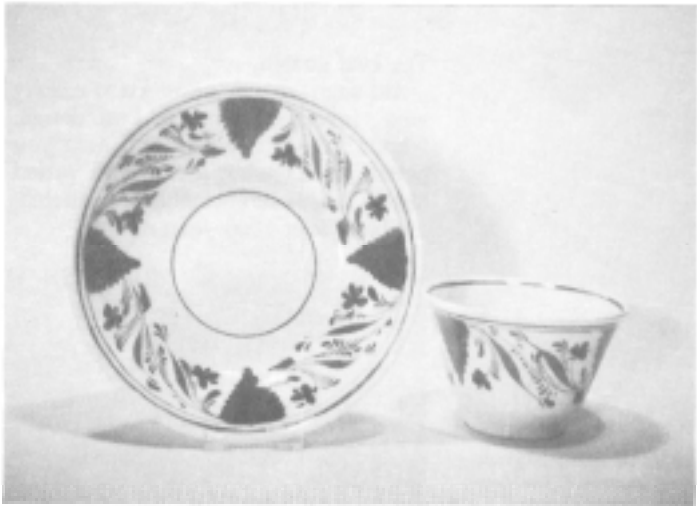


# Climbing the Tea Leaf Family Tree: Early Ancestors (Continued)



*Left Handleless cup and saucer with pink lustre decoration, ca. 1820-30*



*Right: Reproduction Sunderland lustre decorated punch bowl*

Porcelain could also be decorated by the English with lustre glazes and the handleless cup and saucer shown feature hand-painted pink lustre florals against the white ground. I would date this set about 1820-30.

Another variation on the lustre theme is a type of early pink lustre today referred to as **Sunderland lustre** because a lot of this ware was produced in and around the city of Sunderland, England. This type of lustre features a 'spattered' or 'oil spot' effect against a white body which was achieved by splashing an acidic liquid on the lustre glaze before it was fired-the acid reacting against the alkaline glaze like oil in water.

Illustrated is a 1940's reproduction punch bowl which combines the lustre with a black transfer-printed ship design. It was probably made by Gray's Pottery of England.

Copper lustre as a trim or overall decoration remained popular through the 1830s and 1840s, and the sugar bowl in this photo has a simple shape typical of that era. It also features a hand-painted band of colorful enameled flowers accenting the copper lustre ground. Note how these leaves resemble those of our Tea Leaf sprig.

When the process of electroplating metal was developed in the 1840s, silver

lustre wares went out of fashion but copper lustre pieces were still quite popular. However, the styles of this period were moving away from the simple classical designs of previous years and reflected the Romanticism becoming so popular.

Styles and shapes of all sorts of objects became fancier and more ornate with scrolls, curls and foliage motifs. As an example of this more ornate style of copper lustre, here's a tall shaped pitcher which is embossed on the sides with a scene of children. It has a scrolled handle and a mask face under the spout

*Below left: Copper lustre sugar bowl with hand-painted florals, ca. 1830-40*

*Below right: Copper lustre "Romantic" style pitcher and similar New York shape white ironstone pitcher with feaberry decoration*

