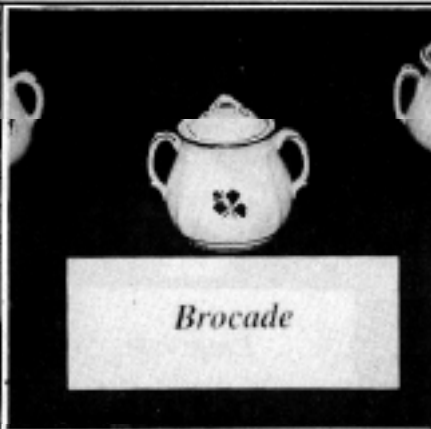




Plain Round



Brocade

◀ Brocade

| Circa: 1880's

■ *Potter(s)*: Alfred Meakin

■ *Characteristics*: High-waisted bulbous body, circular arch finial, domed lid, loop handles, plain base and rim, embossed floral design near foot

▲ Plain Round

■ Circa: 1870's and 1880's

■ *Potter(s)*: Many English and American potters

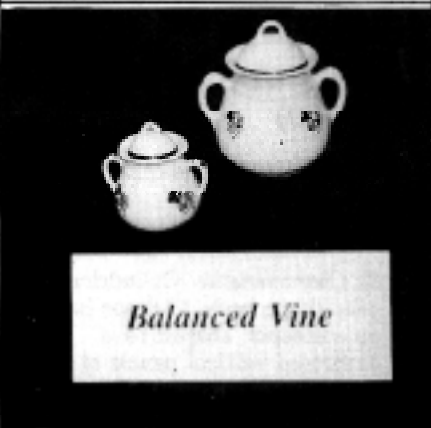
■ *Characteristics*: Characterized by generally plain simple round features

Gentle Square (Rooster) ▶

■ Circa; Registered 1876

■ *Potter(s)*: Thomas Furnival & Sons

■ *Characteristics*: Square body, horizontal arch finial, domed lid, flared rim, shaped base with bracket feet, C-shaped handles, embossed with vertical fluting at corners, handle and finial appear to have rooster or cockscomb corner designs



Balanced Vine

◀ Balanced Vine

| circa: 1880's

| *Potter(s)*: Clementson Bros.

■ *Characteristics*: Low-waisted slightly bulbous body, circular arch finial, domed lid, plain base flared rim, floral and foliage embossing on center front and back



Gentle Square



Fishhook

◀ Lion's head

| Circa: 1880's

■ *Potter(s)*: Mellor-Taylor

| *Characteristics*: Lion's head embossing in a medallion shape at handle angles and in finial, high plateau lid, medallion arch finial, modified bracket handles, body flared to low waist indenting to foot



Lions Head

▲ Fishhook

| circa: 1880's

■ *Potter(s)*: Alfred Meakin

■ *Characteristics*: square shape with ribbing at corners, modified bracket handles, arch finial