

Washington

Washington Shape

- Circa: Registered 1862
- Potter(s): Powell & Bishop

| *Characteristics:* Artichoke finial, stepped cone lid, flared rim, distinctive split where coffeepot handle meets neck, embossed with foliage design from handle terminals covering entire body

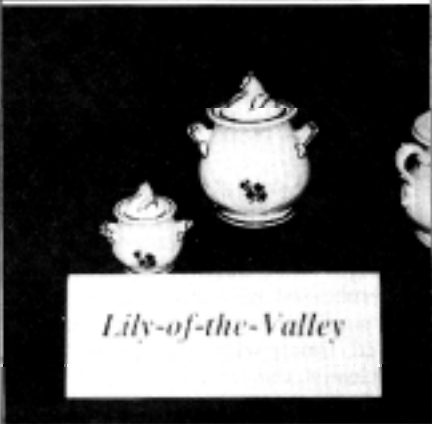


Little Scroll (Tulip)

Lily-of-the-Valley

- Circa: 1860's
- Potter(s): Anthony Shaw

■ *Characteristics:* Lily-of-the-valley finial, domed lid, low-waisted bulbous body, shaped base, flared rim, embossed with lilies and foliage



Lily-of-the-Valley

Little Scroll

- Circa: Registered 1862
- Potter(s): Elsmore & Forster

■ *Characteristics:* Bud finial, domed lid, cylindrical ovoid body shape, embossed with scroll border below rim, loop handle on coffeepot and sugar bowl



Laurel Wreath

Laurel Wreath

- Circa: Registered 1867
- Potter(s): Elsmore & Forster

| *Characteristics:* Cylindrical pear shape body, shaped base, embossed wreath sometimes found with George Washington portrait in center, twisted rope finial



Fig Cousin

Pear

- Circa: 1860's
- Potter(s): Anthony Shaw

| *Characteristics:* Pear shape bud finial, embossed pear leaves at handle terminal around neck, cylindrical spheroid body, low-waisted, base can be either flat or pedestaled



Pear

Fig Cousin

- | Circa: 1870's
- Potter(s): Davenport

■ *Characteristics:* Bud finial, stepped dome lid, low-waisted flared body, ring handles, embossed with fig leaves around handle terminals, distinctive pink lustre trim