

▶ Quartered Rose

■ Circa: 1860

■ Potter(s): J.F.

■ Characteristics: Low-waisted slightly bulbous body, bud finial, stepped cone lid, shaped base, embossed with four loops with heart-shaped details at the neck



Quartered Rose



Grand Loop



Panelled Grape

◀ Panelled Grape

■ Circa: 1860

■ Potter(s): J.F., J. Clementson

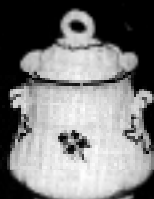
■ Characteristics; Low-waisted eight-lobed bulbous body, embossed with grape detail at handles and finial, stepped cone lid, finials with ring, grape cluster, etc.

▲ Grand Loop

■ Circa: 1860's

■ Potter(s): J.F.

■ Characteristics: Pomegranate finial, domed lid, low-waisted lobed bulbous body, flared rim, shaped base, embossed with four deep loops forming four lobes, foliage below ears



Hanging Leaves

◀ Hanging Leaves

■ Circa: 1860's

■ Potter(s): Anthony Shaw

! Characteristics: Low-waisted body, ring finial, stepped dome lid, shaped base, scalloped rim, C-shape handle on coffeepot, embossed with foliage and heart-shaped loop pattern

BORDERED FUCHSIA

■ Circa: 1860

■ Potter(s): Anthony Shaw

! Characteristics: Low-waisted body, ring finial, stepped dome lid, scalloped rim, shaped base, embossed with floral and foliage design

▶ PRAIRIE Shape

■ Circa: Registered 1862

■ Potter(s): J. Clementson

! Characteristics.- Cylindrical pear shape body, bud finial, domed lid; C-Shape handle on coffeepot, embossed with four panels with wheat stalks and leaves



Prairie Shape



Bordered Fuchsia