



Niagara

Niagara Shape

| Circa: Registered 1856

■ Potter(s): Edward Walley

| Characteristics: Pomegranate finial, domed lid, loop handle on coffee pot, embossed with six loops with fan-like details at junctures, cylindrical spheroid body, flared rim



Huron

Huron Shape

| Circa: Registered in 1858

■ Potter(s): Wm. Adams

| Characteristics: Ring finial, stepped dome lid, slightly bulbous body, embossed with six lobes formed by loops with arrow designs between loops at neck



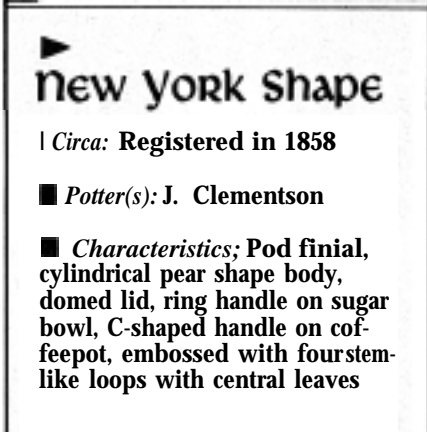
Niagara Fan

Niagara Fan

■ Circa: Registered in 1856

■ Potter(s): Anthony Shaw

■ Characteristics: Artichoke finial, domed lid, embossed with six loops with fan-like detail at lower junctures, low-waisted bulbous body, shaped base, flared rim



New York Shape

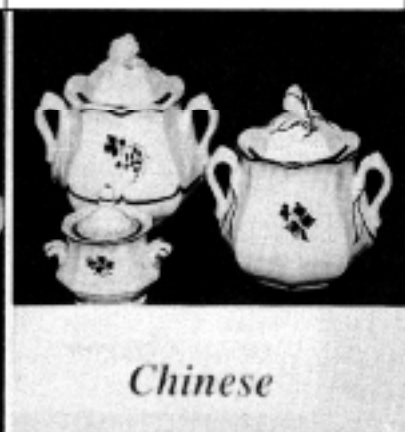
| Circa: Registered in 1858

■ Potter(s): J. Clementson

■ Characteristics: Pod finial, cylindrical pear shape body, domed lid, ring handle on sugar bowl, C-shaped handle on coffee pot, embossed with four stem-like loops with central leaves



New York Shape



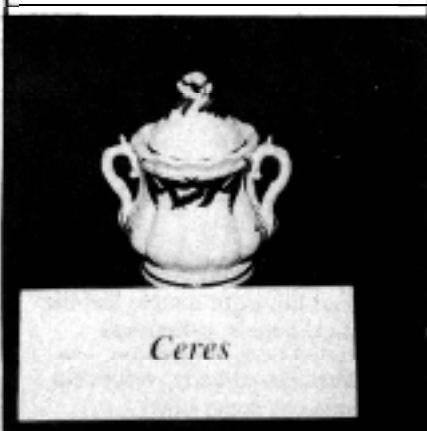
Chinese

Chinese Shape

| Circa: 1850's

■ Potter(s): Anthony Shaw; J. Clementson, T&R Boote

■ Characteristics: Bud finial, stepped panelled dome lid, scalloped rim, embossed with foliage and berries at handle terminals, low-waisted eight-panel bulbous body



Ceres

Ceres

■ Circa: Registered 1859

■ Potter(s): Elsmore & Forster, J&G Meakin, Robert Cochran and others

■ Characteristics: Embossed with wheat sherd encircling neck, ring finial