

Photo 18: Mitten-shaped relish



Photo 19 Bath Set (minus shaving mug)



Photo 20: Covered soap dish



Photo 21: Covered potty

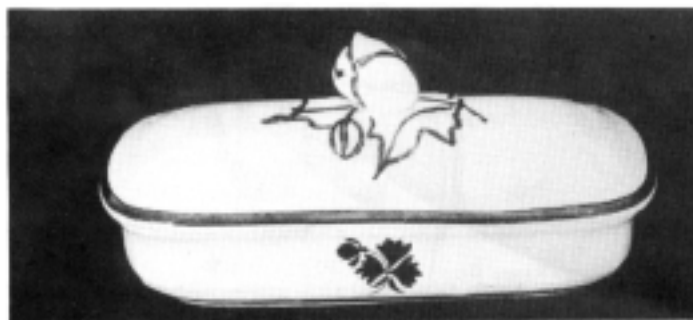


Photo 22: Covered toothbrush

Section V – value Guide

V			
Moderately Priced	Moderately High Priced	High Priced	very High Priced

Section VI – Inventory

NOTE: This is a list of the pieces that are known to the authors. Please send additional information on additional pieces so that we can publish updated inventories.

(Abbreviations: *T= Tall; W= Wide; D= Diameter; F= Top of Finial; S= Tip of spout*)

Plates: 6 3/4" T x 7 7/8" a 3/4" 9 5/8" 10 3/8"

cups / saucers:

Handleless 3 3/16" T x 3 1/2" D

Note: Cups come with two different placements of the Tea Leaf design, one with a single TL on the inside in the bottom of the cup, and one with two TLs on the outside, The associated saucers also have either one or two TLs. Additionally, two different cup styles are known, one with full-sided panels, and one with a double row of Panels.

Handled Small tea cups (or possets), 2 5/16" T x 2 7/8" D; currently no known saucers for this Piece

Mug: Large: 3 3/4" T x 3 3/4" D; Small: 3 1/4" T x 3 3/16" D

soup Plates: Large: 9 5/8" D; Small: a 7/8" D

cup Plate: 4 1/4"

sauce Dish (nappie): 5 1/8"

waste Bowl: Large: 4 1/8" T x 6 1/16" D; Small: 3 5/8" T x 5 1/2" D

gravy Boat: 5 1/4" T x B 1/4" from spout to handle

Relish: (Mitten-Shape) 9" x 5 7/16"

coffee/Tea Pot 9 3/4" F

Sugar bowl Large: 7 7/8" F (base alone is 5 1/4" T);

Small: 6 1/2" F (base alone is 4 3/4" T)

Creamer: Large: 6 1/4" 5 Small: 5" S

Covered Vegetable/Casserole: Large: 9 1/2" x 7 5/16" at the inside lip;

12 1/8" W (to tips of handles x 7 1/8" F

Note: This piece has been seen both with *and without* the customary "panels"

Covered Butter: 7" D x 5 1/4" c Insert is 4 15/16" D

Pitchers: 9" S 7 3/4" S 6 1/2" S

oval open vegetable (Baker) 7" x 9 3/4" 8" x 11"

Rounci Open vegetable: 10 1/4" D x 2 3/8" T

Oval Platters: 10 1/2" x 15"; 14 1/2" x 10 3/8" 16 1/2" x 11 1/8" 17" x 11 3/4"

Soup Tureen: 10 1/8" x 7 5/8" inside lid with lid 11 7/8" F; Undertray is 17" x 11 1/4"; Ladle is 13 1/2" long

Sauce Tureen: 6" x 4 3/8" inside lip measurement with lid 6 3/4" F; undertray is 9 3/8" x 6 1/2"; Ladle is 7 3/8" long

Comport:

Bath Set Pitcher and Bowl: Pitcher is 12" S Bowl is 14 1 1/8" D

Covered Soap: 5 5/8" x 4 3/8" inside lip measurement with lid 4 1/4" F

Covered Potty: 7 1/4" D inside lip; a 7/8" F

Covered Toothbrush: 7 1/2" x 2 5/8" inside lip; 3 1/2" F

Children's Pieces: 3-piece Tea Set (impressed mark)

Section VII – References

Grandma's Tea Leaf /ironstone by Annise Heavilin

A Look at White ironstone by Jean wetherbee

A Second Look at White Ironstone by Jean wetherbee

Tea Leaf Readings, Julie Rich, Editor

Collectors Handbook to Marks on Pottery and Porcelain by E. Paul and A. Petersen

Encyclopedia of British Pottery and Porcelain Marks by Geoffrey A. Godden.

The Information contained in this Research Paper is accurate according to the facts currently available. Future research may uncover additional details which will be reported in subsequent issues of Tea Leaf Readings leaflets. Tea Leaf Club International advises, by this statement, that views and opinions expressed in articles printed in Tea Leaf Club International publications are not necessarily those of Tea Leaf Club International.

Credits:

Photos-Dale Abrams, Gale Frederick, Dan Overmeyer, Proofreading-Julie Rich, Adele Armbruster, Carolyn Nickerson, Annise Heavilin Typesetting & Layout-Chris Weinbrenner.
©1987 Dale Abrams & Gale Frederick